



Newberg Public Schools Health Center

A partnership between:

*Providence Medical Group, Newberg Public Schools, and
Yamhill County Public Health*

Welcome!

An invitation to common ground

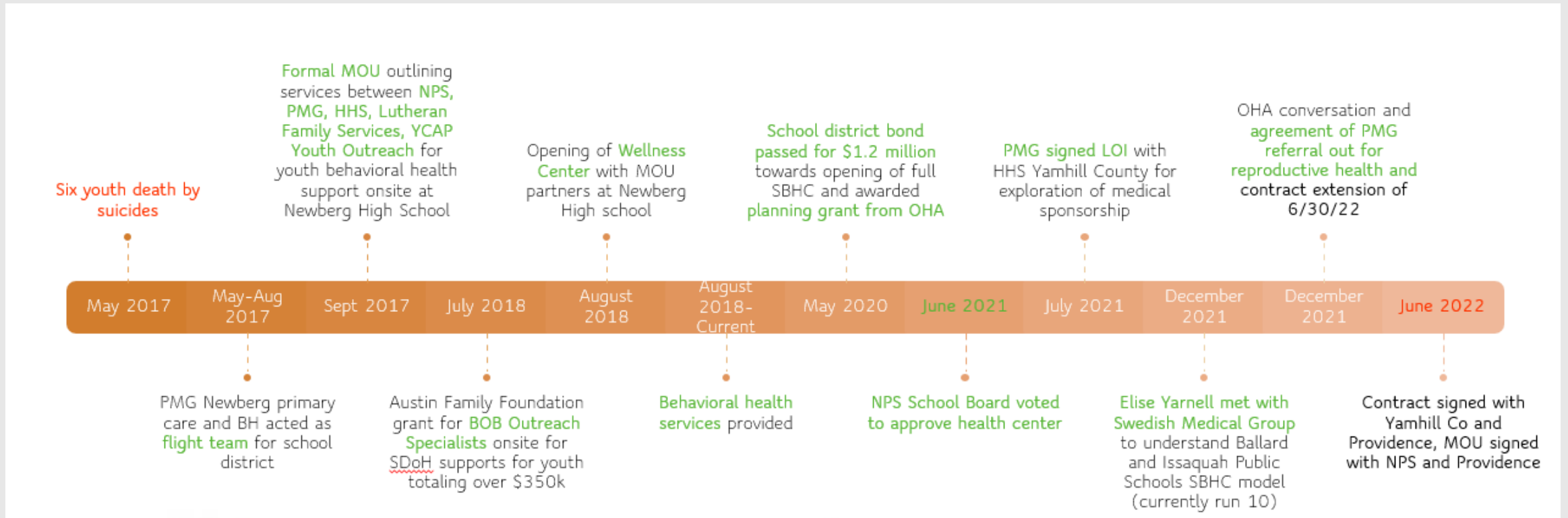
Reflection

Today is:

WORLD MENTAL HEALTH DAY!



How we got here: support for youth mental health



What **organizations** support the health center?

Community Partners within NPS Health Clinic:

| Partner | Responsibility | Leader Oversight | Contact |
|------------------------|---------------------------------------|--|--|
| Providence (lead) | Physical Health Mental Health | Elise Yarnell, Ops Director Nell Rafalovich, Medical Director Jeri Turgesen, MH Director | Elise.yarnell@providence.org Nell.rafalovich@providence.org Jeri.turgesen@providence.org |
| George Fox University | Mental Health | Jeri Turgesen, Supervising PsyD | |
| Yamhill County HHS | Mental Health / Addiction | Lindsey Manfrin, Public Health Director | manfrinl@co.yamhill.or.us |
| Resource Room | Resource Support | Jan Hart Mark Brown (NPS Contact) | janrhart@gmail.com Brownm@newberg.k12.or.us |
| Newberg Public Schools | Superintendent School coordination | Dr. Phillips Tony Buckner | phillipss@newberg.k12.or.us bucknera@newberg.k12.or.us |
| Newberg-Dundee Police | Safety and threat | Officer Jeff Moreland | morelandj@newberg.k12.or.us |

Contract: HHS and OHA

Contract Medical Sponsor: Providence Medical Group

MOU: Providence and Newberg Public Schools

Overview: What is a School-Based Health Center model of care?

- Oregon Health Authority model
- Policy and regulations requirements for credentialing of site
- Designed within parameters by medical sponsor and school district
- School district commitment to access to routine medical and mental health care
- Opt-in model
 - Parental/guardian involvement in consent
 - Following of state statutes

Opt-in model of care

- Three options: full access, opt-out, opt-in
- Understanding and affirmation of current community climate, **chose opt-in**
- Trust building
- **Opt-in**
 - Printed and online form
 - List of opt-in youth provided for health clinic team
 - Those without an opt-in form, health center team strongly encourage parental involvement
 - If adult refuses and child is >15 seeking medical care, or >14 seeking mental health care, health center will follow an exception process in compliance with *ORS 109.610, ORS 109.640, and ORS 109.675, while continuing to encourage safe adult involvement*

Common health services and consent

Although many adults help minor children make health care decisions, there can be times when a minor child does not need or want this involvement. Below is a brief (not exhaustive) list of common services and their consenting requirements in Oregon.

Medical and dental services (ORS 109.640)

Minors who are 15 years or older are able to consent to medical and dental services without parental consent. This includes hospital care, as well as medical, dental, optometric and surgical diagnostic care. This would include services such as:

- Treatment for illnesses or injuries (colds, sprained ankle);
- Sports or camp physicals;
- Dental visits (check-ups, cleanings, fillings);
- X-ray services;
- Emergency room visits;
- Vision care (except for first time contact lens visit); and
- Immunizations.



Mental health and chemical dependency (ORS 109.675)

A minor who is 14 years or older may access outpatient mental health, drug or alcohol treatment (excluding methadone) without parental consent. These services may include:

- Seeking help from a psychiatrist or psychologist;
- Seeking mental health therapy from a doctor or social worker; and
- Seeking help for drug or alcohol use.

Providers are **expected to involve parents** by the end of the minor's mental health, drug or alcohol treatment unless:

- The parent refuses involvement;
- Clear clinical indications to the contrary exist and are documented in the treatment record;
- There is identified sexual abuse; or
- The minor has been emancipated and/or separated from the parent for at least 90 days.



MINOR CONSENT

NPS Health Clinic Scope of Services Oversight

| Physical Health | Behavioral Health (mild to moderate) | Outreach Coordinator/ Resource Room | School Nurse | School Counselor | Not Offered |
|---|---|--|--|--|--|
| PROVIDENCE | PROVIDENCE YAMHILL COUNTY MH | PROVIDENCE RESOURCE ROOM VOLUNTEERS | NEWBERG PUBLIC SCHOOLS | NEWBERG PUBLIC SCHOOLS | PROVIDENCE HHS NEWBERG PUBLIC SCHOOLS |
| Vitals | Depression | Financial support | Medication distribution | Academic support and planning | Reproductive health |
| Physicals: wellness and sports | Anxiety | Food and grocery | First aid care | Risk assessments | Hearing screening |
| Chronic condition: diabetes, hypertension, asthma | Mood disorders | Healthy lifestyle | Basic health assessment | Entry to therapy services | Medical specialties |
| Acute: URI, UTI, STI | Eating disorders | Medical care connection | Chronic condition management | 504 lead | Prenatal care |
| Health concern impacting academic learning | Risk assessments | Transportation support | Assistance in eval of special services | Personal and social support | Complex psychiatric care |
| Depression and anxiety (medication) | Diagnostic clarification and consultation | Housing connection | Edu of infection prevention | Peer mediation | Hormone therapy |
| Vaccines | Healthy lifestyle | Resource room support | Concussion protocol and plan | Navigating relationships | Threat assessment |
| Testing | Bridge care to higher level of services | Personal hygiene products | | Support for parents for service navigation | Dispensing of medication |
| Health education and preventative health | Drug and alcohol support | Clothing | | | |
| Falls: concussion, sprains, sutures | Tobacco cessation | Healthy snacks | | | |

Sensitive Clinical Scenarios

Scenario: Depression + Anxiety

Depression/Anxiety

Scenario:

Youth presents to Providence SBHC reporting concern with Depression or Anxiety.

Clinical Response:

- Assessment of mood related symptoms.
- Assess for current and/or history of suicidal thoughts.
- Assess for risk and safety concerns (suicide, physical safety, emotional safety)
- Provide evidence-based interventions for mood management (cognitive behavioral therapy).
- Our providers strongly encourage family engagement at every encounter, with mindfulness to youth safety.
 - i.e. Abuse, neglect, youth houselessness
- For severe mental health symptoms/concerns: bridge to higher level of care.
- Partner with patient's primary care provider if indicated (i.e. medication evaluation for antidepressant, physical health check-up, etc.).

Additional Considerations:

1. The Providence-SBHC does not dispense medication on-site.
2. Receiving services at the Providence-SBHC does not negatively interfere with a previously existing primary-care provider relationship.
3. All Providence SBHC healthcare will be provided consistent with Oregon State Statutes.

Scenario: Suicidal Ideation

Suicidal Ideation

Scenario:

Youth reports the Providence-SBHC with thoughts or statements around suicide or suicide-related risk.

Clinical Response:

- Assess for risk and safety concerns (suicide, physical safety, emotional safety)
- Complete evidence-based risk assessment – reviewing risk and protective factors.
- Our providers strongly encourage family engagement at every encounter, with mindfulness to youth safety.
 - i.e. Abuse, neglect, youth houselessness
- For Low to Moderate Risk: Appropriate behavioral health intervention and engage a parent, guardian, or safe adult if appropriate.
- For High Risk: Safety planning with parent, guardian, or safe adult.
 - For youth unable to engage effectively or safely in safety planning: Partner w/ TVFR, NSD, and family to transfer youth safely to the Emergency Dept for further evaluation.

Additional Considerations:

1. The Providence-SBHC does not provide transportation.
2. Patient's needing transport to ED will need support via non-emergency transport services (TVFR), parents/guardians, or other supportive transportation consistent with the NSD policy on transporting students.
3. The SBHC does not have admitting privileges, students and families in emergent situations will need to go to the Emergency Department for further evaluation and treatment planning.
4. All Providence SBHC healthcare will be provided consistent with Oregon State Statutes.

Scenario: Birth Control

Birth Control

Scenario:

Youth presents to Providence-SBHC requesting birth control.

Clinical Response:

- If requested by patient, provide pregnancy testing
- Provide safe, comforting space
- Assess for risk and safety concerns (suicide, physical safety, emotional safety)
- Our providers strongly encourage family engagement at every encounter, with mindfulness to youth safety.
 - i.e. Abuse, neglect, youth houselessness
- Discuss and support healthcare goals

Additional Considerations:

1. The Providence-SBHC does not provide antenatal or perinatal healthcare.
2. **The Providence-SBHC does not dispense any medications on site, including birth control.**
3. A youth may access birth control through a local pharmacy.
4. The Providence SBHC will follow all Catholic Healthcare tenants and ERDs as applicable to our organization.
5. All Providence SBHC healthcare will be provided consistent with Oregon State Statutes.

Scenario: Pregnancy

Pregnancy

Scenario:

Youth presents to Providence-SBHC reporting concerns that they may be pregnant.

Clinical Response:

- Offer pregnancy testing if requested by patient
- Provide safe, comforting space
- Provide emotional support
- Assess for risk and safety concerns (suicide, physical safety, emotional safety)
- Our providers strongly encourage family engagement at every encounter, with mindfulness to youth safety.
 - i.e. Abuse, neglect, youth houselessness
- Discuss and support healthcare goals

Additional Considerations:

1. The SBHC does not provide antenatal or perinatal healthcare.
2. Pregnancy related presentations will be referred out to a specialty healthcare provider (OB/Gyn).
3. The Providence SBHC will follow all Catholic Healthcare tenants and ERDs as applicable to our organization.
4. All Providence SBHC healthcare will be provided consistent with Oregon State Statutes.

Scenario: Transgender Health

Transgender Health

Scenario:

Youth presents to Providence-SBHC and self-initiates or self-identifies distress related to gender identity and/or gender dysphoria.

Clinical Response:

- Provide safe, comforting space.
- Provide support.
- Assess and treat for mood-related concerns (depression, anxiety, etc.).
- Assess for risk and safety concerns (suicide, physical safety, emotional safety).
- Our providers strongly encourage family engagement at every encounter, with mindfulness to youth safety.
 - i.e. Abuse, neglect, youth houselessness
- Discuss and support health care goals.

Additional Considerations:

1. The SBHC does not provide medical treatment for gender dysphoria and/or hormone therapy.
2. The Providence SBHC will follow all Catholic Healthcare tenants and ERDs as applicable to our organization.
3. All Providence SBHC health care will be provided consistent with Oregon State Statutes.

General: **Billing, Scheduling, Medical Records**

| BILLING | |
|--|--|
| Certification | Oregon Health Authority (OHA) |
| Visit Charge | Office Visit (PB) |
| Accepted Insurance Plans | ALL |
| In / Out of Network | A charge modifier for school clinic is dropped to allow all plans to be within network, including those typically not accepting in a Providence Clinic |
| Oregon Health Plan (OHP) | Accepted |
| PCP Assignment | Can request to be assigned |
| Referrals and services outside of School Clinic | Need to confirm with insurance plan |
| SCHEDULING | |
| Providence NPS School Clinic | 971-231-5855 |
| MEDICAL RECORDS (Providence Only) | |
| MyChart (online records portal) | All patients will be signed up |
| Hard Copies | 503-215-7423 |
| CONCERNS | |
| Elise Yarnell, Operations Director | Elise.yarnell@providence.org |
| Nell Rafalovich, Medical Director | Nell.rafalovich@providence.org |
| Tony Buckner, Director, NPS | bucknera@newberg.k12.or.us |

Billing Chart: most common charges

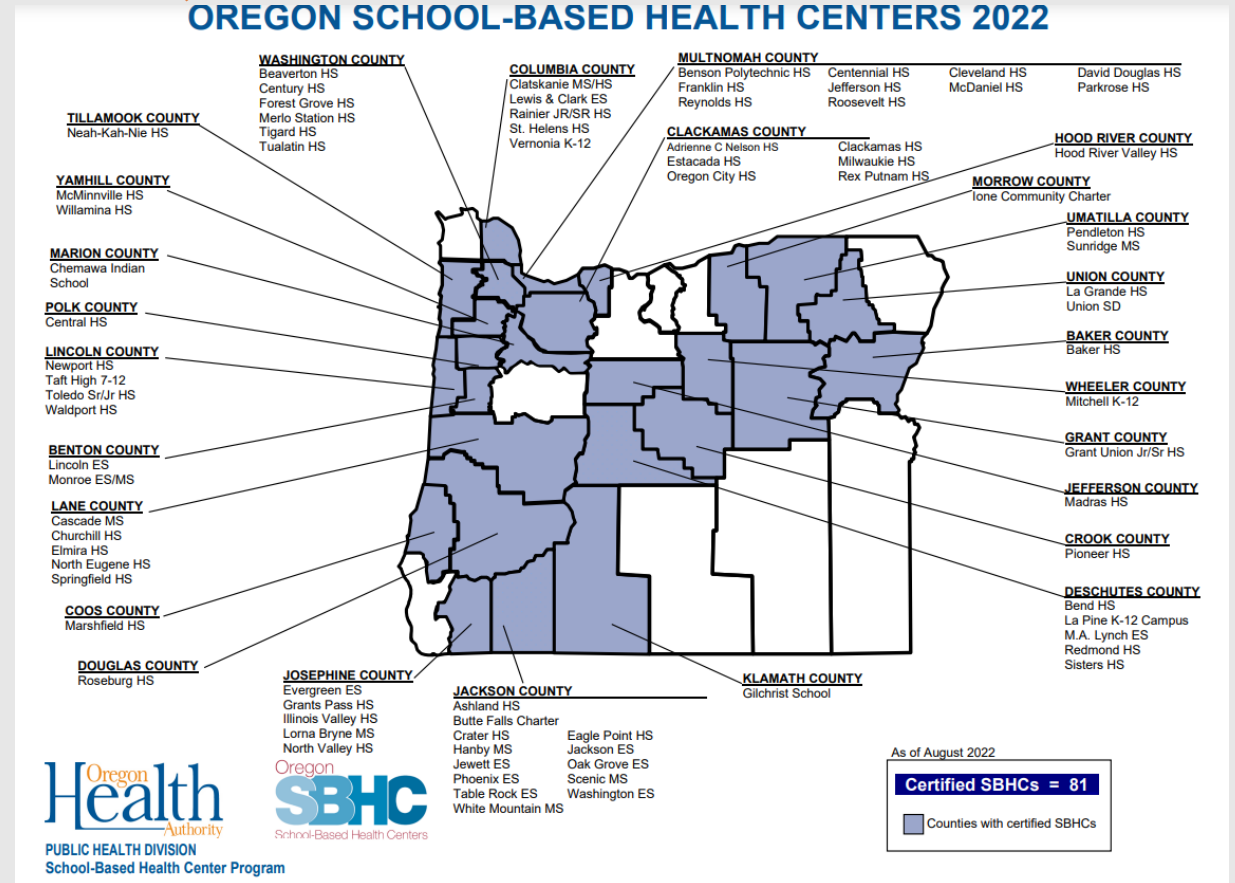
| Physical Health | Service | Cost (pre-insurance) |
|--|--------------------------|------------------------------|
| In person visit | Assessment | \$188-424 |
| Virtual visit | Assessment | \$185-299 |
| Nurse visit | Education, wound care | \$77 |
| Testing | Administration | \$15-47 |
| Ear lavage | Administration | \$51 |
| Vaccines | Administration | FREE |
| Mental Health | | |
| GFU psyD student (supervised by Providence) | Therapy | FREE |
| Yamhill County | Therapy, Drug / Alcohol | <i>More info to come</i> |
| Send out (rare) | | |
| Labs | Draw onsite, send to lab | <i>Dependent on lab type</i> |

We will work with all families on financial assistance whenever it's needed

Have been operating these services since 2017

Other SBHC in Yamhill County and like-communities (81 in the state)

- McMinnville High School
- Yamhill-Carlton High School
- Willamina High School
- Roseburg High School
- Grants Pass High School
- Vernonia K-12
- Sandy High School
- Estacada High School
- Madras High School
- Pendleton High School
- Redmond High School
- Sisters High School



Questions and Answers