

Providence Medical Group
&
Newberg School District
SBHC Update

2/28/23, School Board Work Session



MEET *the* TEAM

Newberg Public Schools
Health Clinic



Elise Yarnell
Director Access,
Providence



Nell Rafalovich, PA
Medical Director,
Providence



Dr. Jeri Turgesen
MH Director,
Providence



Lindsey Manfrin
Director, Yamhill
County HHS



Jan Hart
NHS Lead Volunteer,
Resource Rooms



Katie Worthington
District Liaison, Newberg
Public Schools

Operational Information:

Clinic Hours: Mon.-Fri., 8-5pm
Resource Room: M, W, F, 11:30-1:30pm
Phone Number: 971-231-5855
Virtual Care: Sun.-Sat., 7am-10pm

Concerns?

Elise.Yarnell@providence.org
phillipss@newberg.k12.or.us



SBHC SPONSOR:



PARTNER ORGANIZATIONS



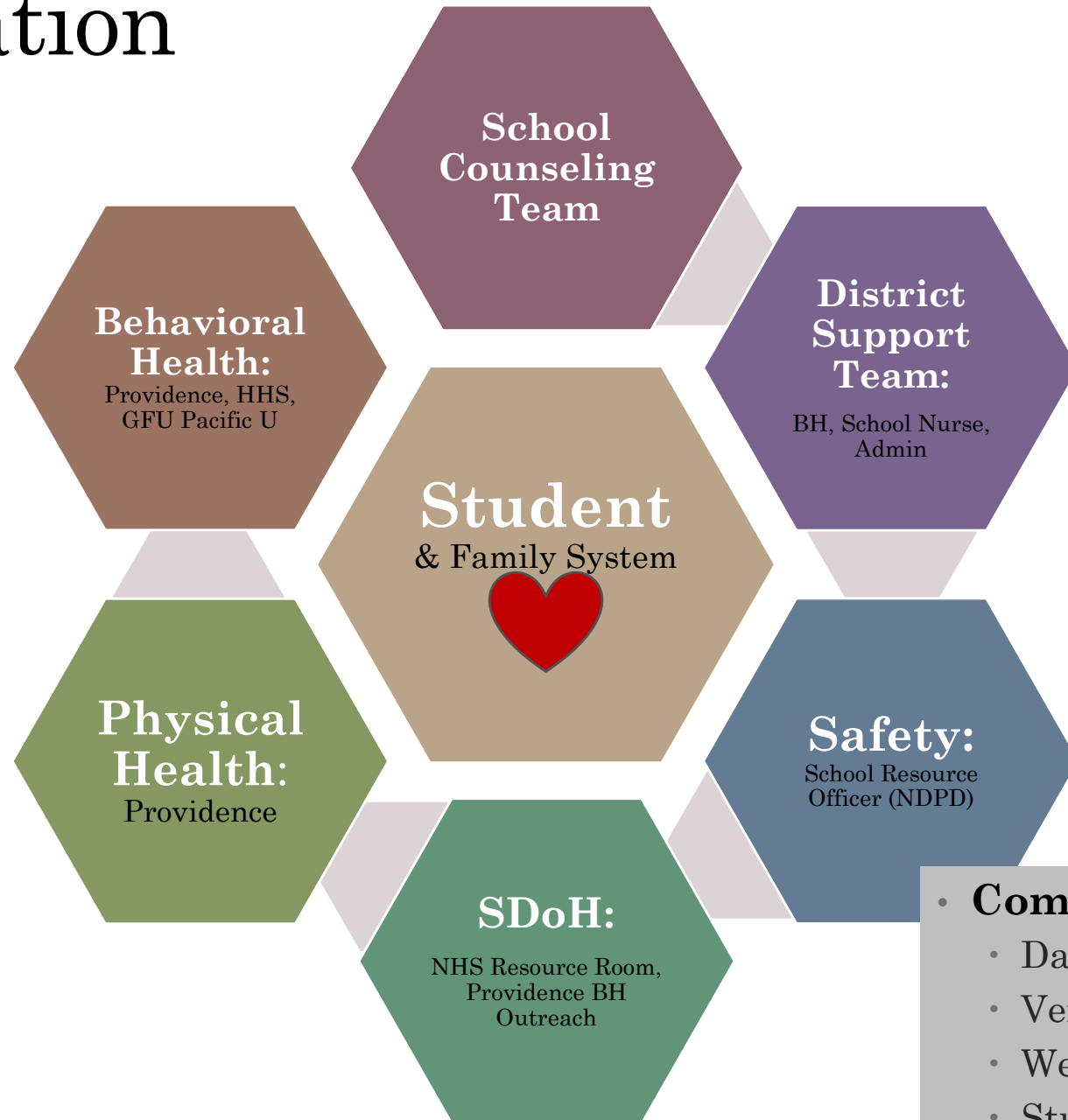
Financial Investment

- **Building / Equipment: Bond capital = \$1.4M**
 - Thank you to Pence Construction!
- **Signage / Supplies / Furniture: Providence = \$75K in-kind**
- **Staffing: OHA grant + Providence + NPS: = \$60k + \$250,000 + \$168,000**
- **Food / Clothes / Hygiene: Resource Room Donors = \$\$\$**
- **Outreach Specialists: Austin Family Foundation (historical) + now Providence = \$150k**

- **Total 2022-2023 Cost (with capital) = \$2,103,000**



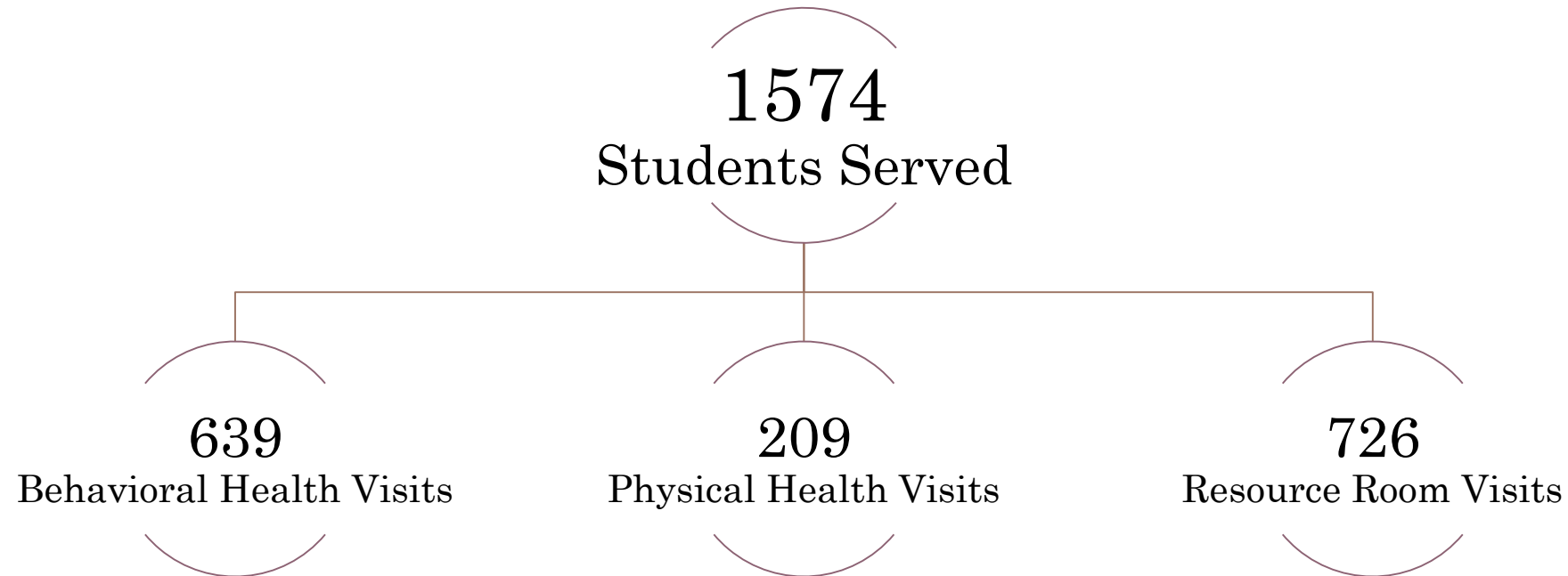
Coordination of Care



- **Communication:**
 - Daily MS Teams Chat
 - Verbal hand-offs
 - Weekly huddles at SBHC
 - Student Case Reviews

SBHC Total Number Visits:

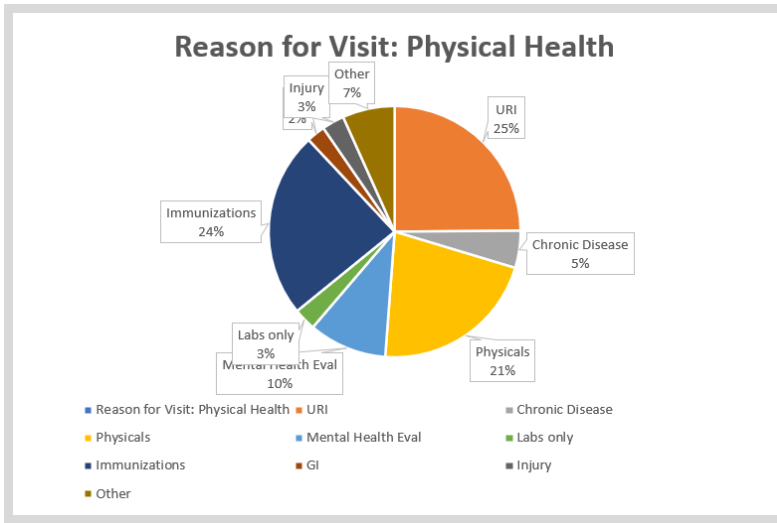
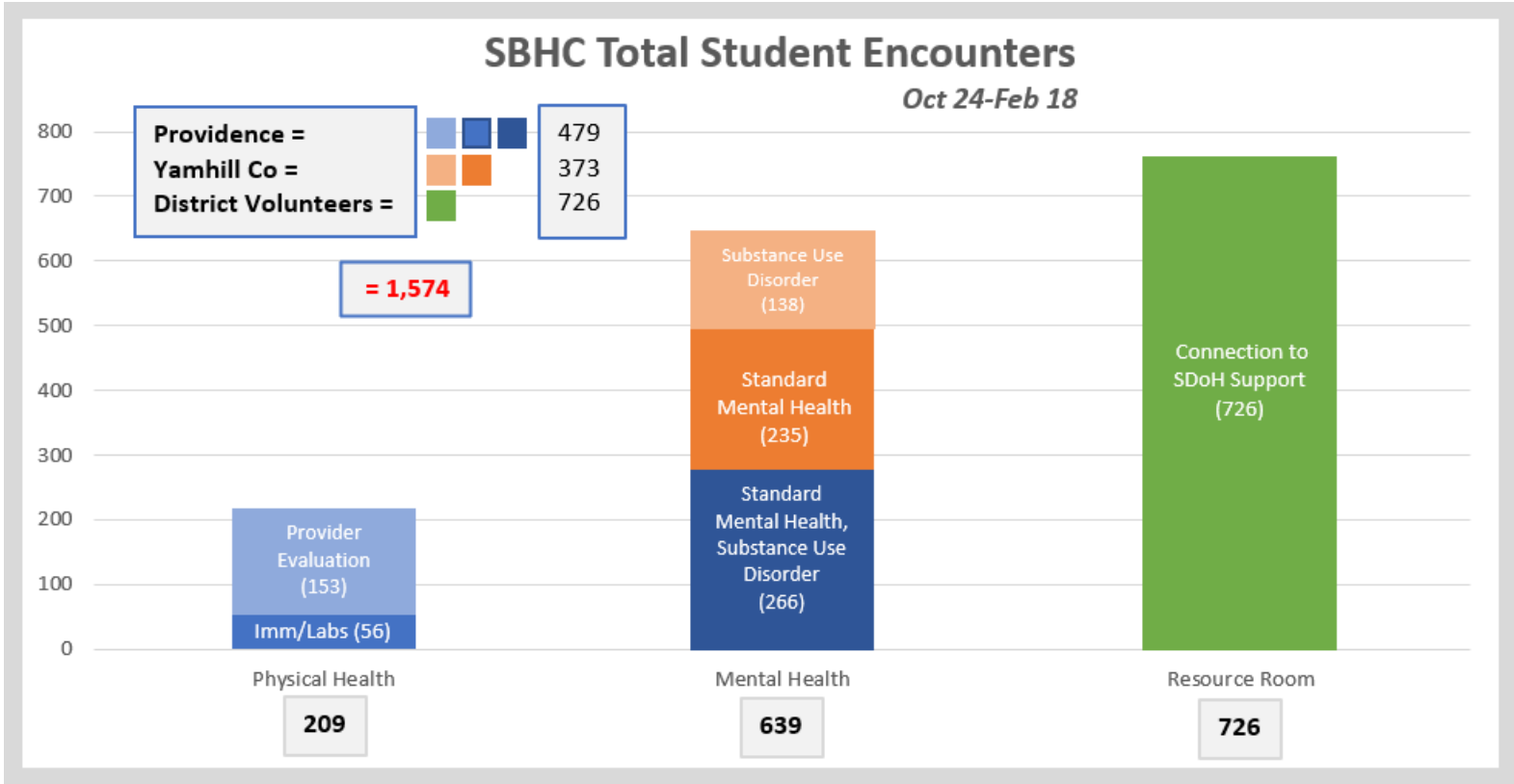
Oct 24-Feb 18



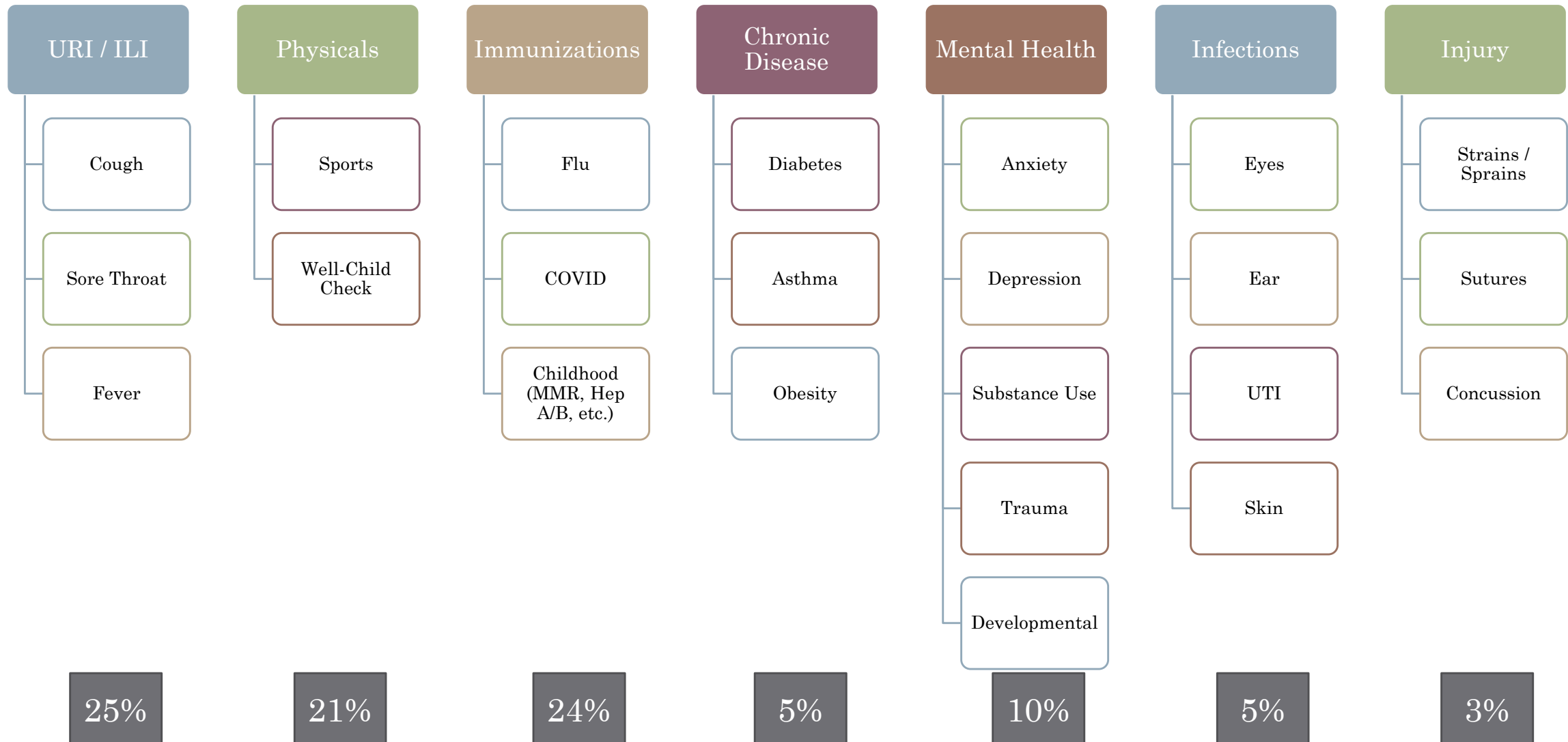
SBHC Data Breakdown

**Youth
Served:
1,574**

**Phone Calls:
Total: 139
ASA: 81 sec.**



Physical Health: Reason for Visit



Behavioral Health Providers

Behavioral Health services at SBHC supported by community partnerships.

Yamhill County Mental Health

Therapist

CADC/Addiction
Provider

Providence Medical Group

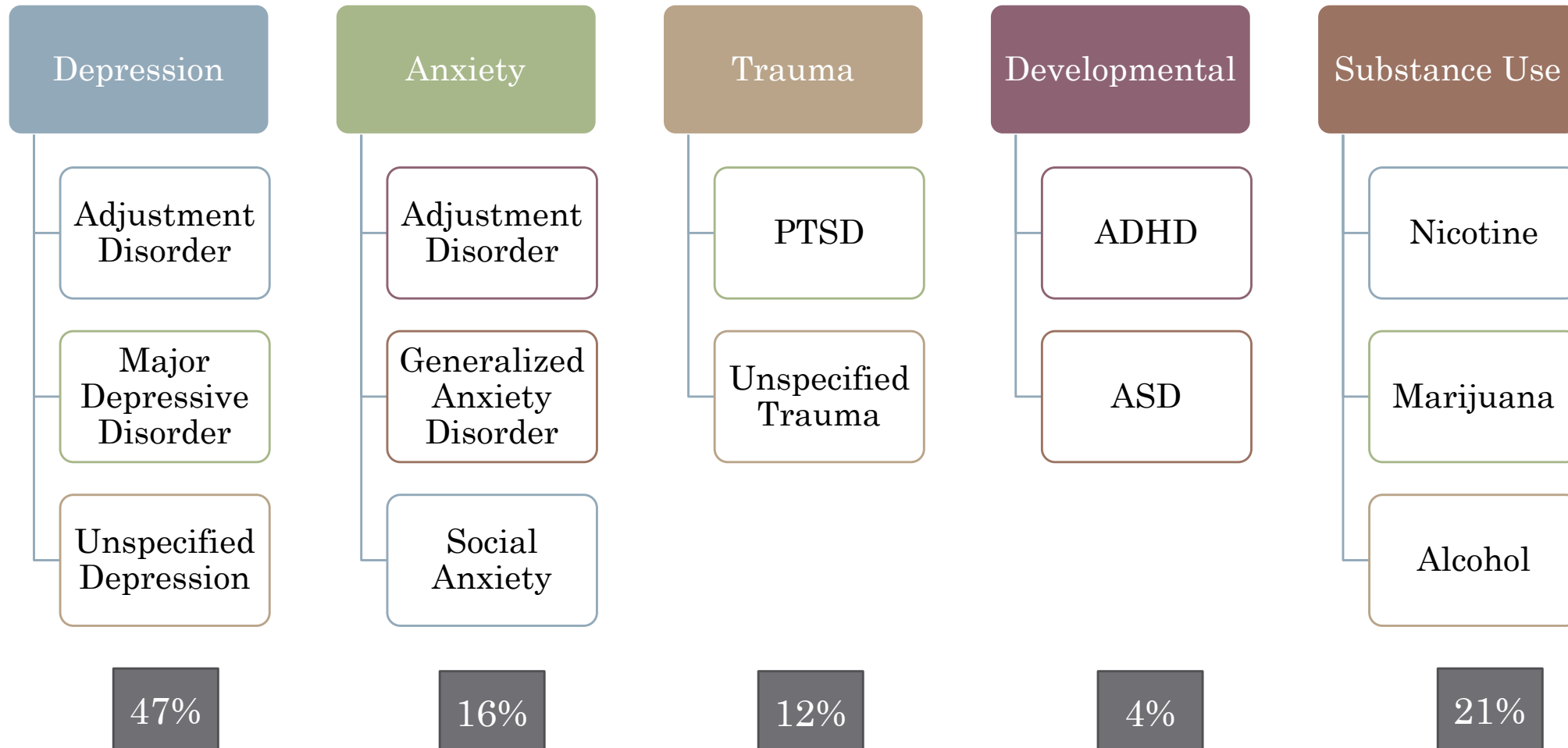
George Fox University; Pacific University

Doctoral Candidates

Psychologist Resident



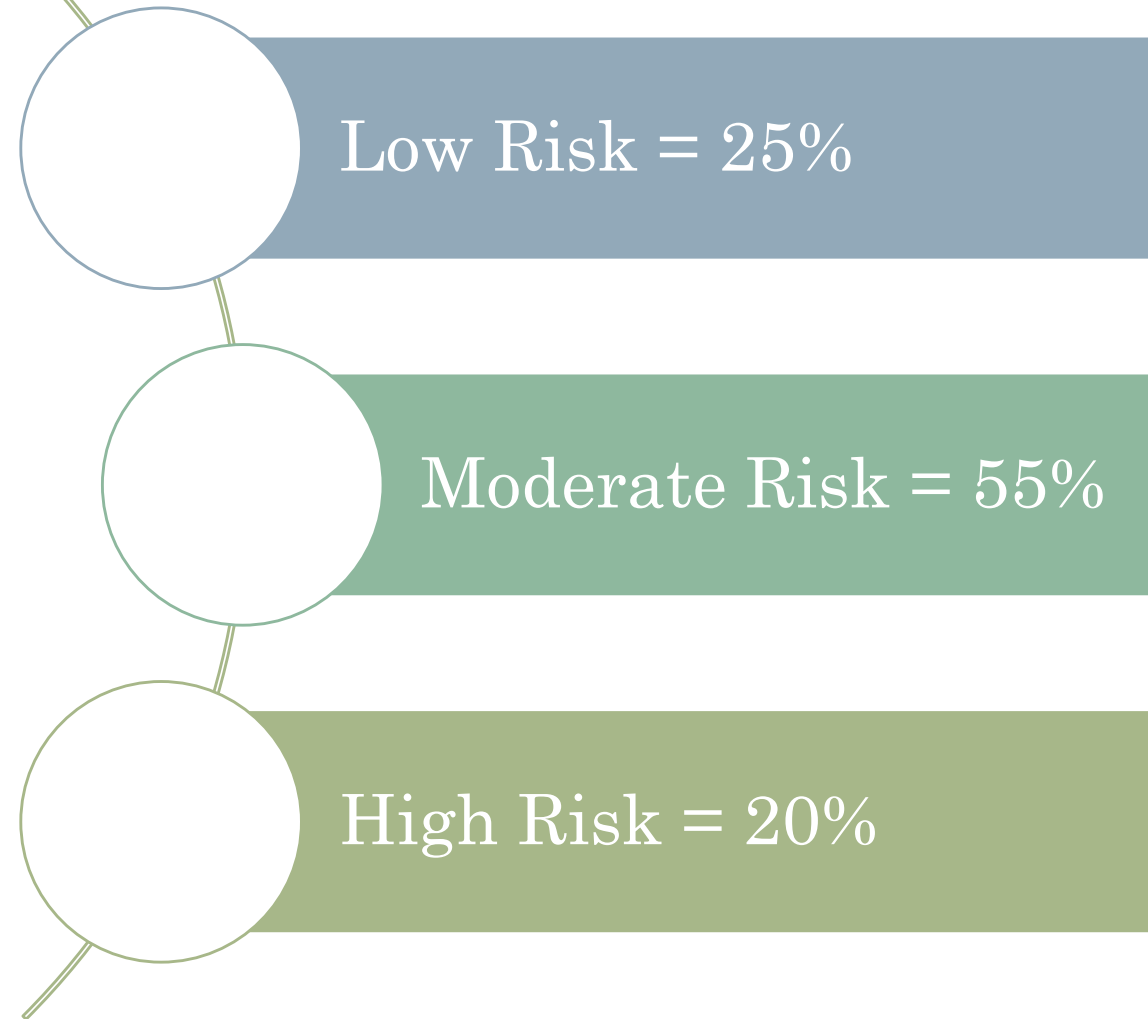
Behavioral Health: Reason for Visit



Largest Area of Concern

Suicidality

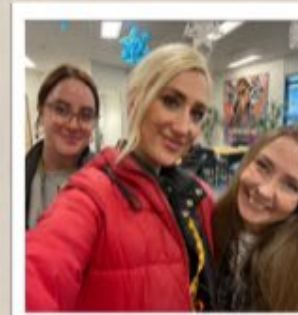
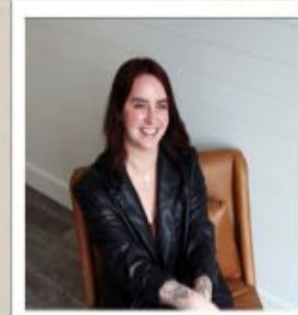
- Approximately 85% mental health visits served are expressing some level of suicidal ideation.
- Approximately 543 visits (108 high risk)
- Ranges from fleeting thoughts to active ideation.



Appendix

Projects Supported:

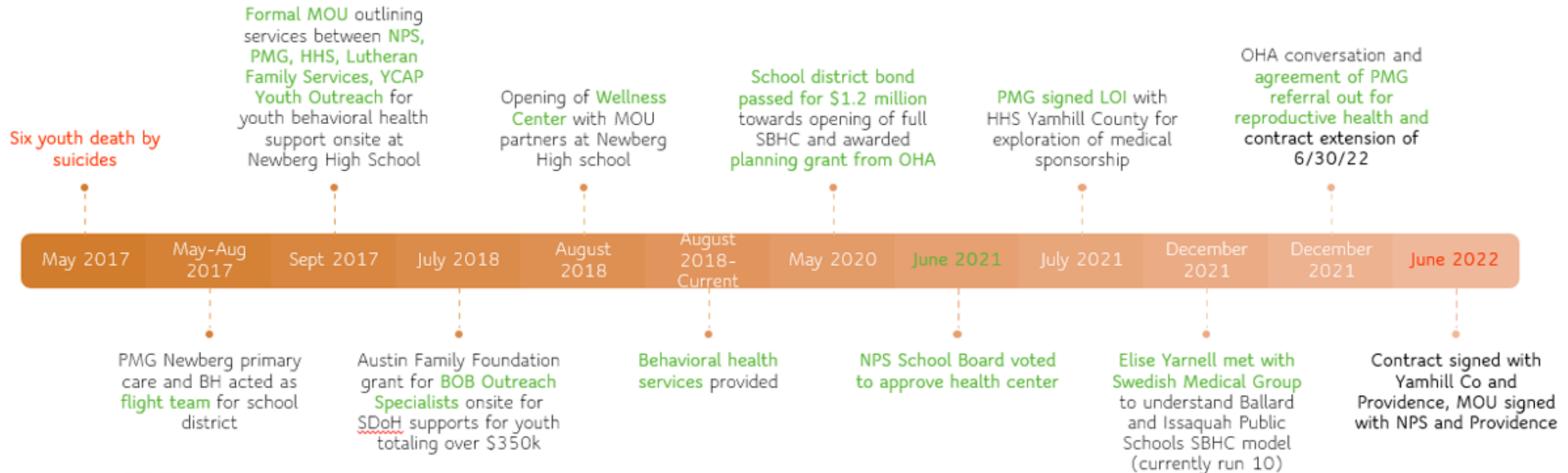
- District Wellness / Appreciation Day
- SBHC Community Town Hall
- Sports Physicals (4 days)
- Holiday family (32 youth)
- Seat on Denise Bacon Focus Group
- Fentanyl Awareness Symposium
- **\$10k in student support funds**



Thank you for entrusting us with the **care** and **support** of Newberg Public School youth and families.

We appreciate you!

How we got here: support for youth mental health



NPS Health Clinic Scope of Services Oversight

Physical Health	Behavioral Health (mild to moderate)	Outreach Coordinator/ Resource Room	School Nurse	School Counselor	Not Offered
PROVIDENCE	PROVIDENCE YAMHILL COUNTY MH	PROVIDENCE RESOURCE ROOM VOLUNTEERS	NEWBERG PUBLIC SCHOOLS	NEWBERG PUBLIC SCHOOLS	PROVIDENCE HHS NEWBERG PUBLIC SCHOOLS
Vitals	Depression	Financial support	Medication distribution	Academic support and planning	Reproductive health
Physicals: wellness and sports	Anxiety	Food and grocery	First aid care	Risk assessments	Hearing screening
Chronic condition: diabetes, hypertension, asthma	Mood disorders	Healthy lifestyle	Basic health assessment	Entry to therapy services	Medical specialties
Acute: URI, UTI, STI	Eating disorders	Medical care connection	Chronic condition management	504 lead	Prenatal care
Health concern impacting academic learning	Risk assessments	Transportation support	Assistance in eval of special services	Personal and social support	Complex psychiatric care
Depression and anxiety (medication)	Diagnostic clarification and consultation	Housing connection	Edu of infection prevention	Peer mediation	Hormone therapy
Vaccines	Healthy lifestyle	Resource room support	Concussion protocol and plan	Navigating relationships	Threat assessment
Testing	Bridge care to higher level of services	Personal hygiene products		Support for parents for service navigation	Dispensing of medication
Health education and preventative health	Drug and alcohol support	Clothing			
Falls: concussion, sprains, sutures	Tobacco cessation	Healthy snacks			

What **organizations** support the health center?

Community Partners within NPS Health Clinic:

Partner	Responsibility	Leader Oversight	Contact
Providence (lead)	Physical Health Mental Health	Elise Yarnell, Ops Director Nell Rafalovich, Medical Director Jeri Turgesen, MH Director	Elise.yarnell@providence.org Nell.rafalovich@providence.org Jeri.turgesen@providence.org
George Fox University	Mental Health	Jeri Turgesen, Supervising PsyD	
Yamhill County HHS	Mental Health / Addiction	Lindsey Manfrin, Public Health Director	manfrinl@co.yamhill.or.us
Resource Room	Resource Support	Jan Hart Mark Brown (NPS Contact)	janrhart@gmail.com Brownm@newberg.k12.or.us
Newberg Public Schools	Superintendent School coordination	Dr. Phillips Tony Buckner	phillipss@newberg.k12.or.us bucknera@newberg.k12.or.us
Newberg-Dundee Police	Safety and threat	Officer Jeff Moreland	morelandj@newberg.k12.or.us

Contract: HHS and OHA

Contract Medical Sponsor: Providence Medical Group

MOU: Providence and Newberg Public Schools

Billing Chart: most common charges

Physical Health	Service	Cost (pre-insurance)
In person visit	Assessment	\$188-424
Virtual visit	Assessment	\$185-299
Nurse visit	Education, wound care	\$77
Testing	Administration	\$15-47
Ear lavage	Administration	\$51
Vaccines	Administration	FREE
Mental Health		
GFU <u>psyD</u> student (supervised by Providence)	Therapy	FREE
Yamhill County	Therapy, Drug / Alcohol	<i>More info to come</i>
Send out (rare)		
Labs	Draw onsite, send to lab	<i>Dependent on lab type</i>

We will work with all families on financial assistance whenever it's needed

Have been operating these services since 2017

Overview: What is a School-Based Health Center model of care?

- Oregon Health Authority model
- Policy and regulations requirements for credentialing of site
- Designed within parameters by medical sponsor and school district
- School district commitment to access to routine medical and mental health care
- Opt-in model
 - Parental/guardian involvement in consent
 - Following of state statutes

Opt-in model of care

- Three options: full access, opt-out, opt-in
- Understanding and affirmation of current community climate, **chose opt-in**
- Trust building
- **Opt-in**
 - Printed and online form
 - List of opt-in youth provided for health clinic team
 - Those without an opt-in form, health center team strongly encourage parental involvement
 - If adult refuses and child is >15 seeking medical care, or >14 seeking mental health care, health center will follow an exception process in compliance with *ORS 109.610, ORS 109.640, and ORS 109.675, while continuing to encourage safe adult involvement*

Common health services and consent

Although many adults help minor children make health care decisions, there can be times when a minor child does not need or want this involvement. Below is a brief (not exhaustive) list of common services and their consenting requirements in Oregon.

Medical and dental services (ORS 109.640)

Minors who are 15 years or older are able to consent to medical and dental services without parental consent. This includes hospital care, as well as medical, dental, optometric and surgical diagnostic care. This would include services such as:

- Treatment for illnesses or injuries (colds, sprained ankle);
- Sports or camp physicals;
- Dental visits (check-ups, cleanings, fillings);
- X-ray services;
- Emergency room visits;
- Vision care (except for first time contact lens visit); and
- Immunizations.



Mental health and chemical dependency (ORS 109.675)

A minor who is 14 years or older may access outpatient mental health, drug or alcohol treatment (excluding methadone) without parental consent. These services may include:

- Seeking help from a psychiatrist or psychologist;
- Seeking mental health therapy from a doctor or social worker; and
- Seeking help for drug or alcohol use.

Providers are **expected to involve parents** by the end of the minor's mental health, drug or alcohol treatment unless:

- The parent refuses involvement;
- Clear clinical indications to the contrary exist and are documented in the treatment record;
- There is identified sexual abuse; or
- The minor has been emancipated and/or separated from the parent for at least 90 days.



MINOR CONSENT