

MVMS News

August 2013

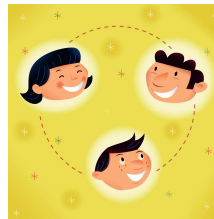
Wayne Strong, Principal

Scott Murphy, Assistant Principal

Welcome... Back! New Staff

Things are humming at Mtn. View Middle School in anticipation of the new school year! New lockers have been ordered and are scheduled to be installed before our annual 6th Grade BBQ and 7th/8th Grade Ice Cream Social. Our new Science wing has walls and a roof, with a January 2013 completion date. Most of our Science teachers have set up classrooms in the Portables. PE's Fitness Lab will have a new home as well.

Doris Bowman - Pathways
Melinda Henry - Pathways
Heidi King - ELL
Scott Murphy - Assistant Principal
Janet Quist - Advanced Choir



It's BBQ and Ice Cream Social Time

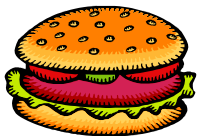
August 28 - 6th Grade BBQ 5-8 pm

August 29 - 7th & 8th Grade Ice Cream Social 5-8 pm

What to expect

Food
Pay school fees
Information
Class Schedule
Locker assignment/combination
Meet teachers
And more!

These events are an open house format. **Lines are long at the beginning of the events with the slowest time between 7 and 8 pm.** If lines are long, take the opportunity to eat first!



What to bring:

• **Completed Annual Student Review (ASR)** this is also known as the Emergency Contact Form (enclosed in this mailing). **This is your "ticket" into the event!** Before you come please make any necessary changes to this form. ***Email is a very big communication tool at Mtn. View. Please be sure your email is up-to-date or added to the ASR.***

• **Completed Receipt** (enclosed in this mailing) - To help make the fee lines move faster, please complete the enclosed receipt and have your **cash or check** (payable to MVMS) ready.

• ***Yourselves and your student!***

(See page 3 for details)

Important Dates to Remember

August 28
6th Grade BBQ
5-8 pm

August 29
7th & 8th Grade
Ice Cream Social
5-8 pm

September 4
First day of school
7:45am - 2:20 pm
School opens at 7:15 am

September 5
Picture Day

September 10
MVMS Magazine
Drive Kickoff

September 12
Mtn. View Parent Group
(MVPG) Meeting
1:00 pm

What's Inside

School Hours and More
BBQ and Ice Cream Social
(continued)
Calendar

Other items in this mailing:

Annual Student Review Form
Did You Know
Rules/Guidelines
Supply List
Receipt

School Hours and More



Does your student know how to get home on the first day of school? Do they know their address? Are they a bus rider? Want to know what bus they ride?

www.newberg.k12.or.us/district/school-district-bus-transportation

School hours from the first through last day of school are 7:45 am to 2:20 pm with warning bells ringing at 7:40 am. There is an exception...Wednesdays in the Newberg School District are called Late Start Wednesdays. School hours are 8:45 am to 2:20 pm with the warning bell ringing at 8:40 am.

Students may enter the building through the Commons door at 7:15 am (8:15 am on Wednesdays – if you need to drop off your student prior to 8:15 am, a study hall is provided beginning at 7:15 am).

The office is open Monday through Friday from 7:00 am to 4:00 pm.

MVMS has three ½ hour **lunch times** which rotate every 12 weeks or so. The schedule rotates so that all grades experience 1st, 2nd and 3rd lunch times.

Now on the first day of school things are a bit different...

*6th graders report to the main entrance where they will be personally greeted and escorted directly to their first period teacher.

*7th and 8th graders will assemble in the Gym and Commons area where a list with their first period teacher will be posted on the walls.

The first day has time set aside to orient students to their new schedules, classroom locations, lockers, and school operation procedures.

If you are aware of any new middle school students in the MVMS boundary, please pass onto their parents that new student registration begins on August 21 from 8:30 am - 2:30 pm. It is very helpful if they have the name and address of their previous school and current immunization records. Students will be given a math and reading test during this time.

September 5 – Picture Day

Picture packets will be sent home the first day of school. All students will have their picture taken, at no charge, for their Student ID card and Mtn. View's Yearbook.

We all know that occasionally things get lost! If during the school year your student loses their student ID, a replacement can be purchased in the main office for \$3.

September 10 kicks off our annual magazine drive

Funds raised during this event pay for items such as: incentives, incentive trips, teacher/classroom requests, etc. The funds are then spent with guidance and approval of parents during a Mtn. View Parent Group meeting. We very much appreciate participation and support of this fundraiser, but we do not require or pressure student involvement. We would like to stress that students should not make door-to-door sales. We encourage parent/guardian participation to work with students if they choose to be involved.

June 13 is our 8th Grade Celebration

which begins at 8:15 am. Students should arrive at school at the normal time as they will be given their 8th Grade Celebration T-shirts prior to this event. The shirts cost \$10 and can be paid for during the 7th & 8th Grade Ice Cream Social on August 29 or prior to March 1.

Family members are invited to this event. Parking is available in the MVMS lot, NHS Tennis Court lot or on the street.



BBQ/Ice Cream (continued)

These evenings take the place of Back to School Night and we strongly encourage you to bring your student with you. We ask that all students be accompanied by an adult.

If you have a 6th grader and a 7th or 8th grader, we encourage you to attend the August 29 event. Schedules and locker assignments will not be available for 7th and 8th graders prior to the August 29 event.

The first step during this event is to turn in your completed Annual Student Review Form and receive a "passport" that will guide you through various stations in our Gym. Be sure to get a stamp showing you've visited each area!

Fees - Fees can be paid via cash or check made out to MVMS.

Fees to pay that night:

*PE Uniform (required for 6th Graders and any 7th and 8th Graders in need of a new uniform) - \$15

*PE Sweats (optional) - \$23 Set; sweat pants \$12; sweatshirt \$11

*Yearbook (optional) - \$20

7th & 8th Graders may have the following fees as well as the fees listed above:

*Art/Science Discovery (if you are enrolled in the class) - \$15

*8th Grade Celebration T-shirt (required) - \$10

PE Uniforms are shorts and a shirt.

The same uniform is mandatory at both Newberg middle schools and the high school, which will enable you to use it for many years! After you've paid for the PE Uniform, stop by the PE Station to pick it up and you'll be ready for school!

PE Sweats - If your student decides to wear sweats in addition to their uniform, these are the ones they'll need to wear. Pay for them at the Fee Station and place an order at the PE Station.

Yearbook - Yearbooks are distributed the second to last day of school.

8th Grade Celebration

T-shirts - All 8th Graders who attend the 8th Grade Celebration on the last day of school, will be wearing these awesome shirts...pay now or you can pay by March 1.

Edline - Pick up an Edline code and you'll have online access to your student's grades or missing work.

Absent from school? Homework is posted on Edline as well!

E-School News - MVMS sends out weekly news via email. This email will share with you what's happened during the week, future events, a calendar and emergency notifications. If you sign up for MVMS E-school News, you'll receive news from the District as well. **Email is our main form of communication.**

Lunch Money (pay with separate check) Stop in the Commons to deposit lunch money in your child's account and they'll be ready for the first day. This year's middle school prices are: \$1.50 for breakfast and \$2.75 for lunch. If you are applying for free and reduced lunches, please remember an application must be completed every year. You can also put lunch money on your student's account via the internet at myschoolbucks.com for a small fee.

School Supplies - There will be places to drop off computer paper, glue sticks and tissue. Students may bring their school supplies and leave them in their locker.

Schedule and Locker Assignment

This last station is where your student will receive their schedule and locker assignment. Walk through their schedule with them, meet their teachers and practice opening their locker! If your student desires to personalize the inside of their locker, only magnets or reusable adhesive products are to be used. Please do not use any type of tape or attach stickers as they cause damage to the locker finish.

CPRD - Learn about sports and other class offerings.

Bus Barn - find out what bus your student will ride (if any) as well as pick up and drop off times. If your student rides the bus, the bus they ride will be for middle and high school students only. The bus arrives much earlier in the morning as well as getting home earlier in the afternoon. Some routes require students to get on the bus at the high school... they may ride a transfer bus from MVMS to the high school or remain in our gym after school until 2:33 pm. Students opting to remain in the gym will be escorted to the high school to catch their bus. You may be asking why these students are asked to stay in our gym. The release time for the high school is 2:35 pm; this allows our students enough time to walk to the high school without interrupting high school classes.

Mtn. View Parent Group - The parent group meets the second Wednesday of every month at 1 pm.

There are a variety of volunteer opportunities at Mtn. View and these folks have the information. We truly appreciate you and your volunteer time!

Check out these upcoming opportunities:

August

28 – MV 6th Grade Orientation/BBQ 5-8 pm

29 – MV 7th & 8th Grade Ice Cream Social 5-8 pm

Approximately 10-12 volunteers needed for each of the above events

September

4 – First day of School - 6-8 volunteers needed

5 – MV Picture Day - 3 volunteers needed

Magazine Drive which kicks off on the September 10.

Volunteer Badge - You've signed up to volunteer at MVMS...do you have a Volunteer badge? If the answer is no, a stop at this station will allow you to complete the Criminal History form and have your picture taken for the badge.. Pick up your badge at the end of September in the MVMS Office.

Calendar

August

- 21 - New Student Registration Begins
8:30 am - 2:30 pm
- 28 - MV 6th Grade BBQ 5-8 pm
- 29 - MV 7th & 8th Grade Ice Cream Social 5-8 pm

September

- 4 - First day of School
- 5 - MV Picture Day
- 10 - Magazine Drive Kickoff
- 12 - MV Parent Group 1 pm
- 13 - District Instrument Fair 2:30 - 6:30 pm

October

- 10 - MV Parent Group 1 pm
- 12 - No School - Statewide Teacher In-service Day
- 19 - MV Picture Retakes

November

- 14 - MV Parent Group 1 pm
- 12 - No School - Veteran's Day
- 19 - No School - Staff Development/Curriculum
- 20 - No School - Planning/Conferences - **Exact dates and times of MVMS's Conferences will be announced at a later date**
- 21 - No School - Teacher Furlough Day
- 22 & 23 - No School - Thanksgiving Holiday

December

- 12 - MV Parent Group 1 pm
- 24 - Jan 4 - No School - Winter Break

January

- 7 - No School - Staff Development/Curriculum
- 8 - School Resumes
- 16 - MV Parent Group 1 pm
- 21 - No School - Martin Luther King Day
- 31 - First Semester Ends

February

- 1 - No School - Planning/Grading Day
- 13 - MV Parent Group 1 pm
- 18 - No School - President's Day

March

- 13 - MV Parent Group 1 pm
- 25 - 29 - No School - Spring Break

April

- 10 - MV Parent Group 1 pm
- 11 - No School - Grading/Conferences - **Exact dates and times of MVMS's Conferences will be announced at a later date**
- 12 - No School - Teacher Furlough Day

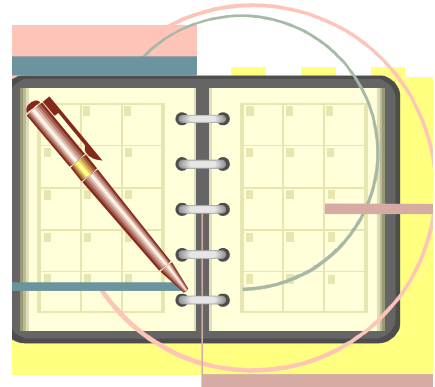
May

- 8 - MV Parent Group 1 pm
- 27 - No School - Memorial Day

June

- 4 - MV 5th Grade Orientation 7 pm
- 5 - MV Parent Group 1 pm
- 12 - Yearbook distribution
- 13 - MV 8th Grade Celebration 8:15 am
- 13 - Field Day for 6th & 7th Graders
- 13 - Last Day of School (1/2 day)

All Calendar items are subject to change.



Visit our website...

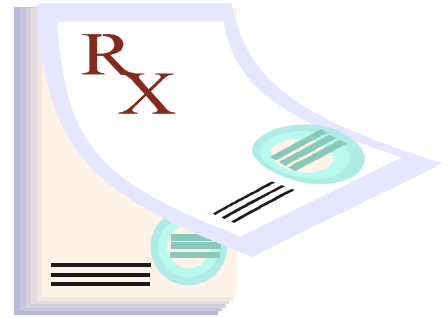


www.newberg.k12.or.us/mountainview

Mt. View Middle School
2015 N Emery Dr.
Newberg, OR 97132
Phone: 503-554-4500
Fax: 503-537-3337

Medication

If your student has a medical issue that we should be aware of, please come prepared to complete a health alert. We'll need to know the doctor's name, the type of medical issue, what type of medication your student is on, how often to give the medication, how you want us to respond if there is an occurrence, etc.

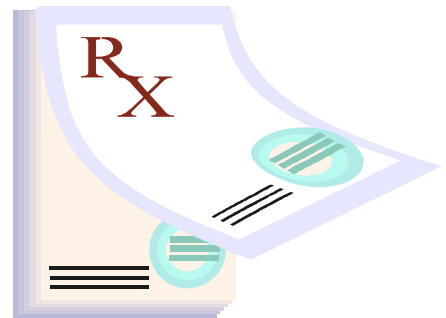


If your student is going to need any kind of medication at school, you must complete a form in the office (beginning August 23) and bring in the medication (State law mandates that we can not accept medication brought in by students). This includes prescriptions and over-the-counter medicines (such as headache medication). We prefer smaller bottles whenever possible. Cough drops are the only medication that a student can carry.

Unused medications will only be returned to the parent at the end of the school year. Any unclaimed medications will be discarded a week after school is out for the summer.

Medication

If your student has a medical issue that we should to be aware of, please come prepared to complete a health alert. We'll need to know the doctor's name, the type of medical issue, what type of medication your student is on, how often to give the medication, how you want us to respond if there is an occurrence, etc.



If your student is going to need any kind of medication at school, you must complete a form in the office (beginning August 23) and bring in the medication (State law mandates that we can not accept medication brought in by students). This includes prescriptions and over-the-counter medicines (such as headache medication). We prefer smaller bottles whenever possible. Cough drops are the only medication that a student can carry.

Unused medications will only be returned to the parent at the end of the school year. Any unclaimed medications will be discarded a week after school is out for the summer.